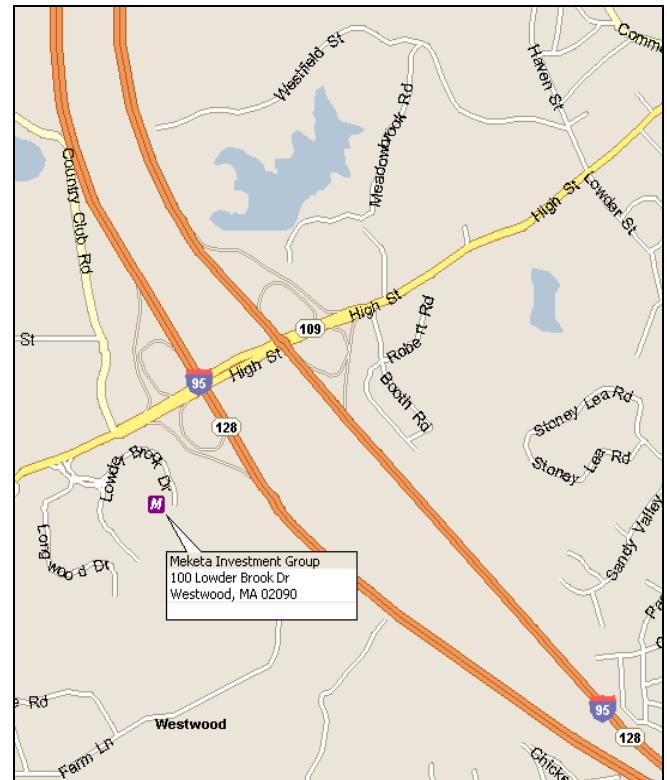
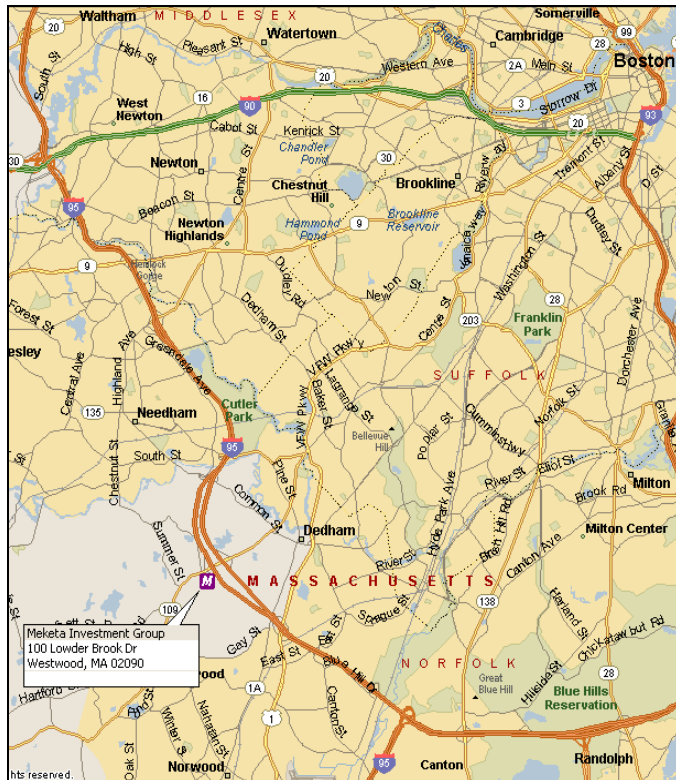




DIRECTIONS TO MEKETA INVESTMENT GROUP



From South/West of Boston:

Follow I-93 South. I-93 South becomes I-95 North. Take Exit 16B – Westwood, Route 109 West and bear right on to High Street. Take a LEFT at the first set of lights. Bear left and follow the signs to 100 Lowder Brook Drive.

From Logan Airport:

Go through the Ted Williams Tunnel and follow to I-93 South. I-93 South becomes I-95 North. Take Exit 16B – Westwood, Route 109 West and bear right on to High Street. Take a LEFT at the first set of lights. Bear left and follow the signs to 100 Lowder Brook Drive. Approximate travel time without traffic is 30 minutes.

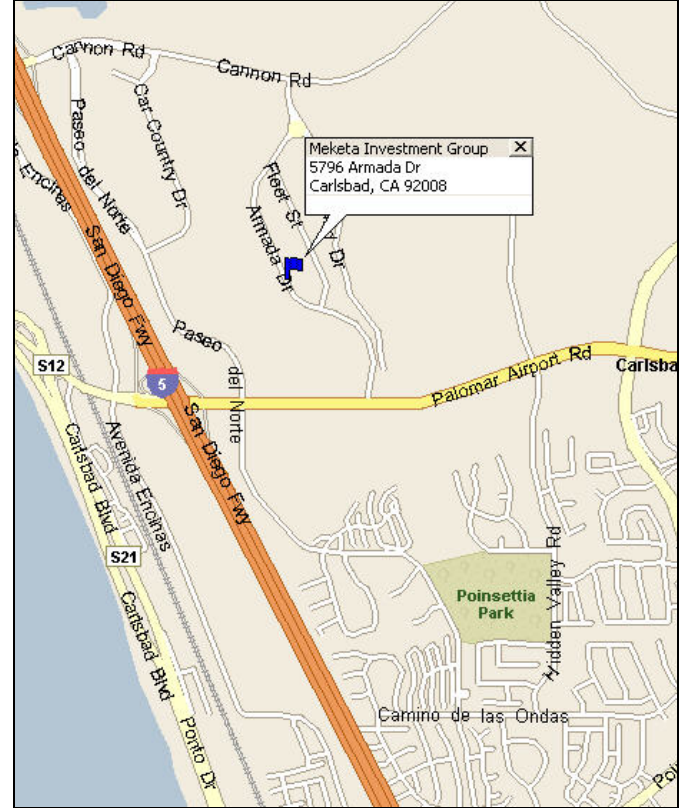
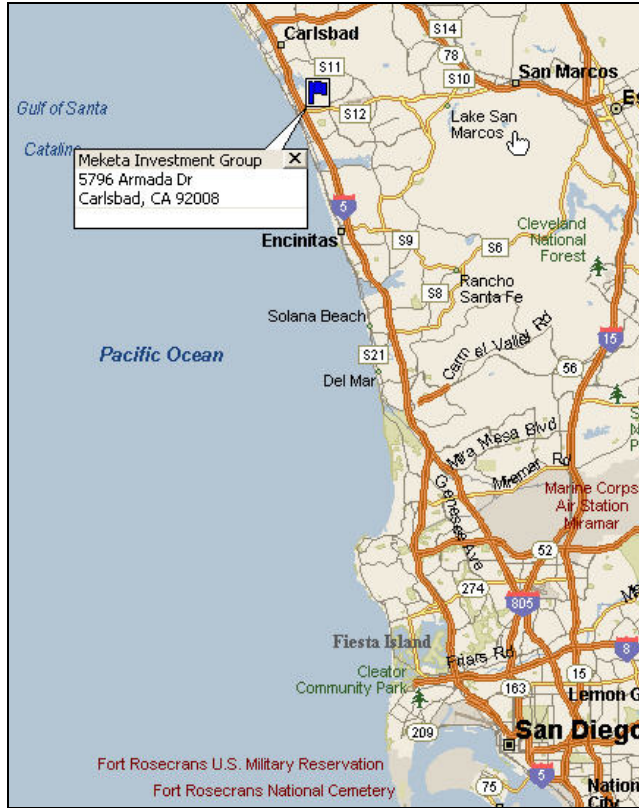
From South Station:

Go Northeast on Atlantic Ave/South Station and turn LEFT at Summer Street. Turn LEFT at Surface Road. Turn LEFT to merge onto I-93/US 1 South. I-93 South becomes I-95 North. Take Exit 16B – Westwood, Route 109 West and bear right on to High Street. Take a LEFT at the first set of lights. Bear left and follow the signs to 100 Lowder Brook Drive. Approximate travel time without traffic is 30 minutes.

Our office is immediately on the right after going through the revolving doors, Suite 1100.



DIRECTIONS TO MEKETA INVESTMENT GROUP



From San Diego International Airport:

Depart from San Diego International Airport/Lindbergh Field heading west toward North Harbor Drive. Turn RIGHT at North Harbor Drive for approximately 1.4 miles. Turn RIGHT on Nimitz Boulevard, then turn RIGHT on Rosecrans Street/CA-209 North. Continue on CA-209 North for approximately 2.2 miles and follow signs to I-5 North. Stay on I-5 North for approximately 27 miles. Take Exit 47 - Palomar Airport Road. At light at end of exit, turn RIGHT onto Palomar Airport Road. Merge over to the left lane and continue to the second light, turning LEFT onto Armada Drive. Continue for .8 of a mile, and turn RIGHT onto Fleet Street. Almost immediately, turn LEFT into the first driveway into the parking lot. Approximate travel time is 40 minutes.

From Los Angeles:

Follow I-5 South. Take Exit 48 - Cannon Road. At the end of exit, turn LEFT onto Cannon Road for approximately .8 of a mile. Turn RIGHT onto Legoland Drive, and bear right to turn onto Armada Drive for approximately .6 of a mile. Turn left into the parking lot just past the Museum of Music, or if you miss the driveway, turn LEFT on Fleet Street and then LEFT into the parking lot.

Our office is straight ahead after going through the double doors, Suite 110.