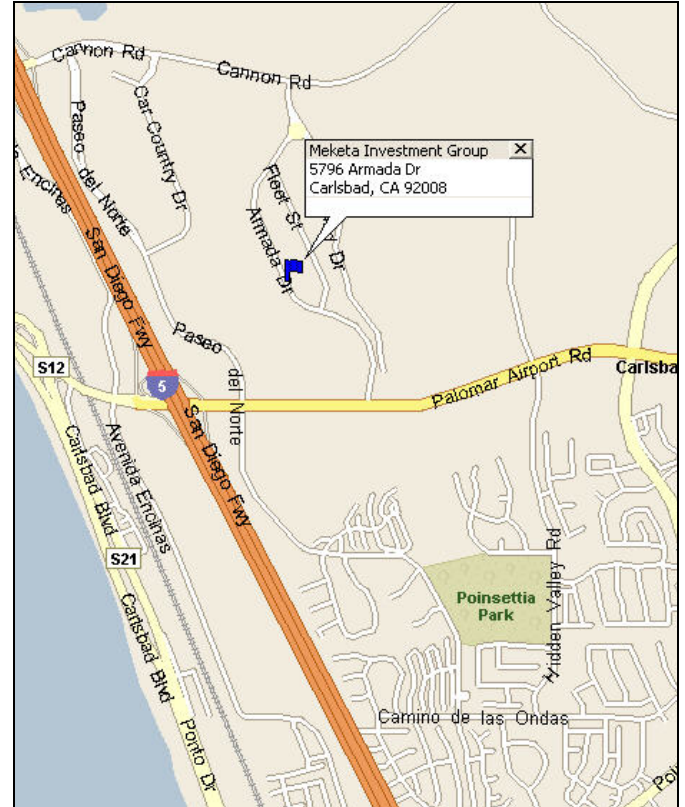
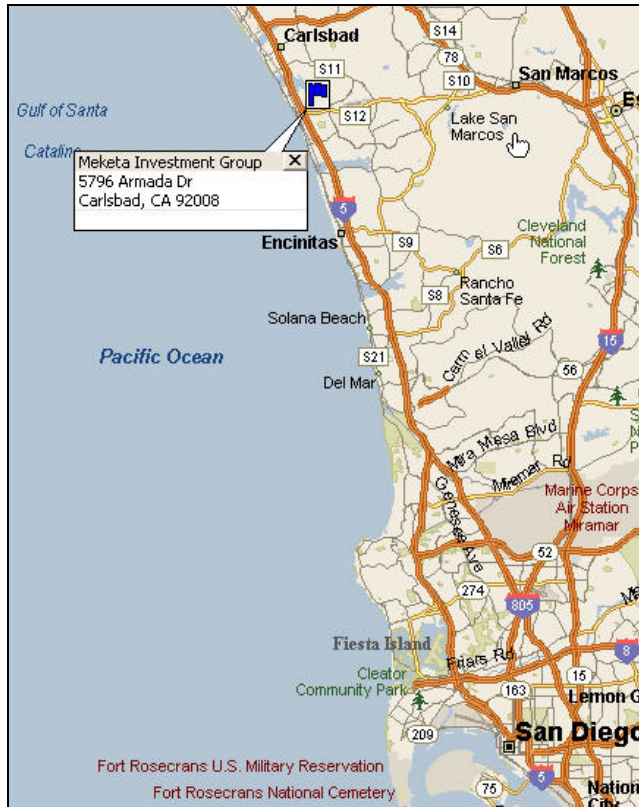




DIRECTIONS TO MEKETA INVESTMENT GROUP



From San Diego International Airport:

Depart from San Diego International Airport/Lindbergh Field heading west toward North Harbor Drive. Turn RIGHT at North Harbor Drive for approximately 1.4 miles. Turn RIGHT on Nimitz Boulevard, then turn RIGHT on Rosecrans Street/CA-209 North. Continue on CA-209 North for approximately 2.2 miles and follow signs to I-5 North. Stay on I-5 North for approximately 27 miles. Take Exit 47 - Palomar Airport Road. At light at end of exit, turn RIGHT onto Palomar Airport Road. Merge over to the left lane and continue to the second light, turning LEFT onto Armada Drive. Continue for .8 of a mile, and turn RIGHT onto Fleet Street. Almost immediately, turn LEFT into the first driveway into the parking lot. Approximate travel time is 40 minutes.

From Los Angeles:

Follow I-5 South. Take Exit 48 - Cannon Road. At the end of exit, turn LEFT onto Cannon Road for approximately .8 of a mile. Turn RIGHT onto Legoland Drive, and bear right to turn onto Armada Drive for approximately .6 of a mile. Turn left into the parking lot just past the Museum of Music, or if you miss the driveway, turn LEFT on Fleet Street and then LEFT into the parking lot.

Our office is straight ahead after going through the double doors, Suite 110.